

TOP HUNG SYSTEM

RS120

FINISHES:

#8 POLISHED S/S

#4 SATIN S/S

US3 POLISHED BRASS

US4 SATIN BRASS

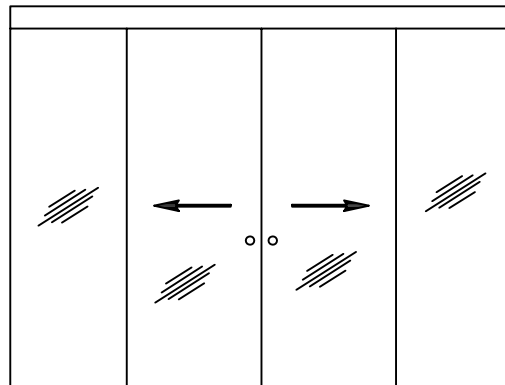
ANODIZED FINISHES

PAINTED FINISHES

US10B WITH A

CLEAR BAKED ENAMEL

- *RS-120 system can be used with 5/16", 3/8" or 1/2" glass.*
- *Track length is 2X the panel width.*
- *Maxium sliding panel weight is 264 lbs.*
- *Track will be split when you length exceeds 157".*



TOP HUNG SYSTEM

RS120

FINISHES:

#8 POLISHED S/S

#4 SATIN S/S

US3 POLISHED BRASS

US4 SATIN BRASS

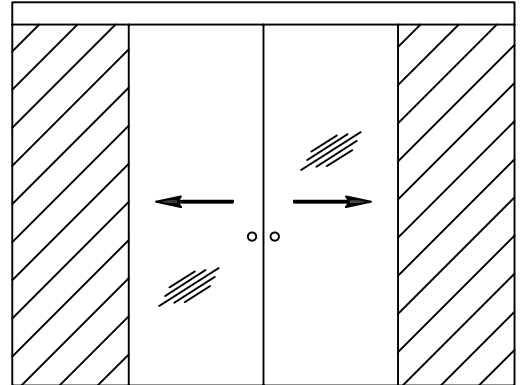
ANODIZED FINISHES

PAINTED FINISHES

US10B WITH A

CLEAR BAKED ENAMEL

- *RS-120 system can be used with 5/16", 3/8" or 1/2" glass.*
- *Track length is 2X the panel width.*
- *Maxium sliding panel weight is 264 lbs.*
- *Track will be split when you length exceeds 157".*



TOP HUNG SYSTEM

HSW

FINISHES:

#8 POLISHED S/S

#4 SATIN S/S

US3 POLISHED BRASS

US4 SATIN BRASS

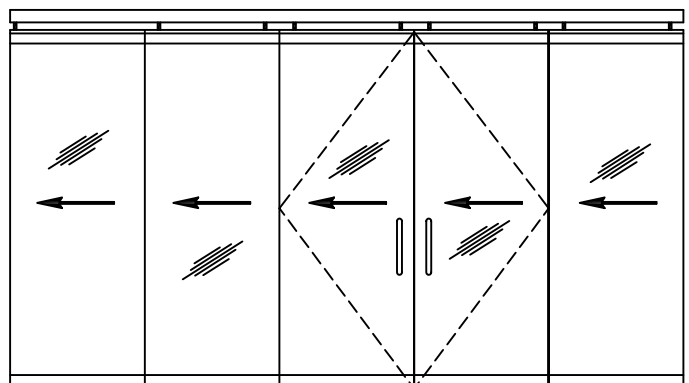
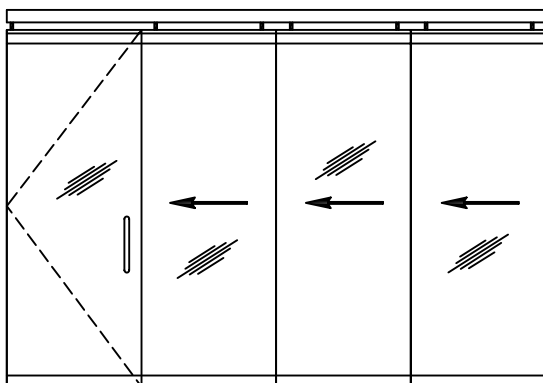
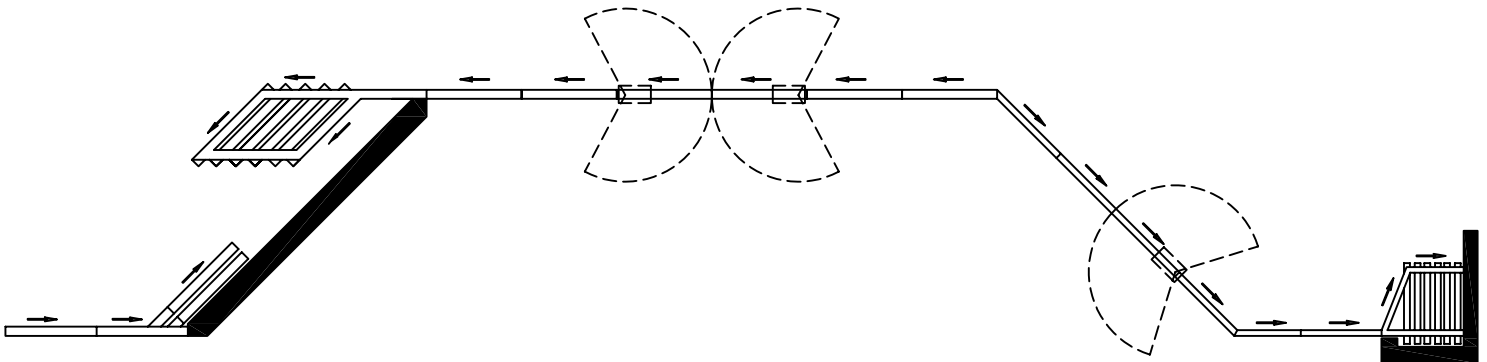
ANODIZED FINISHES

PAINTED FINISHES

US10B WITH A

CLEAR BAKED ENAMEL

- Designed for 1/2" or 3/8" glass thickness
- Special designed rollers ensure easy and smooth action around 90° corners.
- No floor track or guides required.
- When store is closed, double-action, lockable doors can be planned at any location.
- The HSW technique enables architects and designers to have fixed panels or operating doors that can be rolled away .



TOP HUNG SYSTEM

HSW

FINISHES:

#8 POLISHED S/S

#4 SATIN S/S

US3 POLISHED BRASS

US4 SATIN BRASS

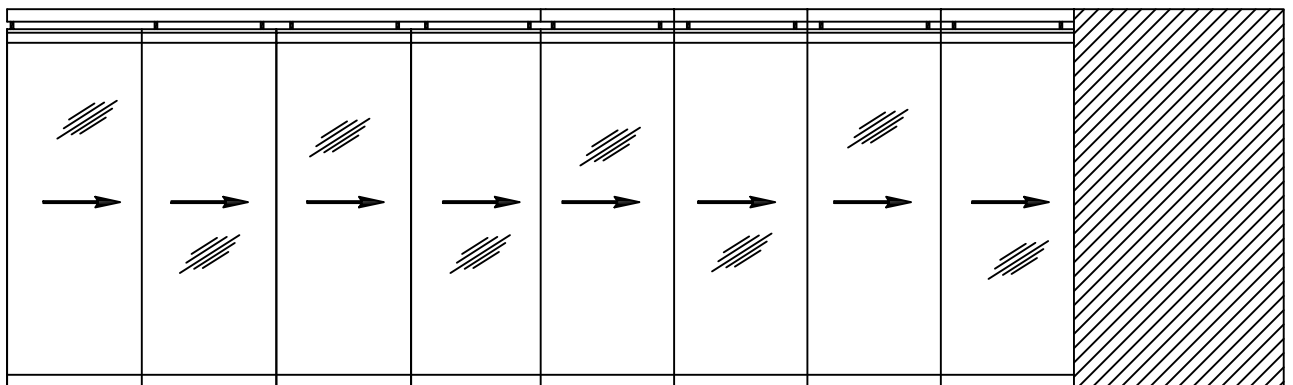
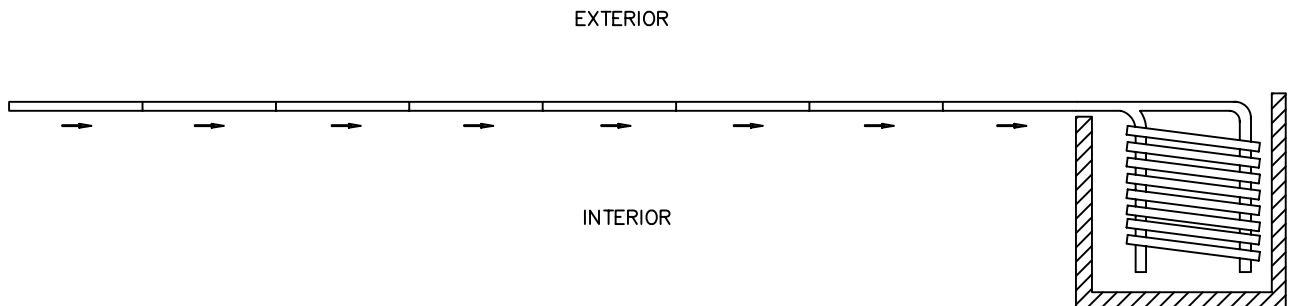
ANODIZED FINISHES

PAINTED FINISHES

US10B WITH A

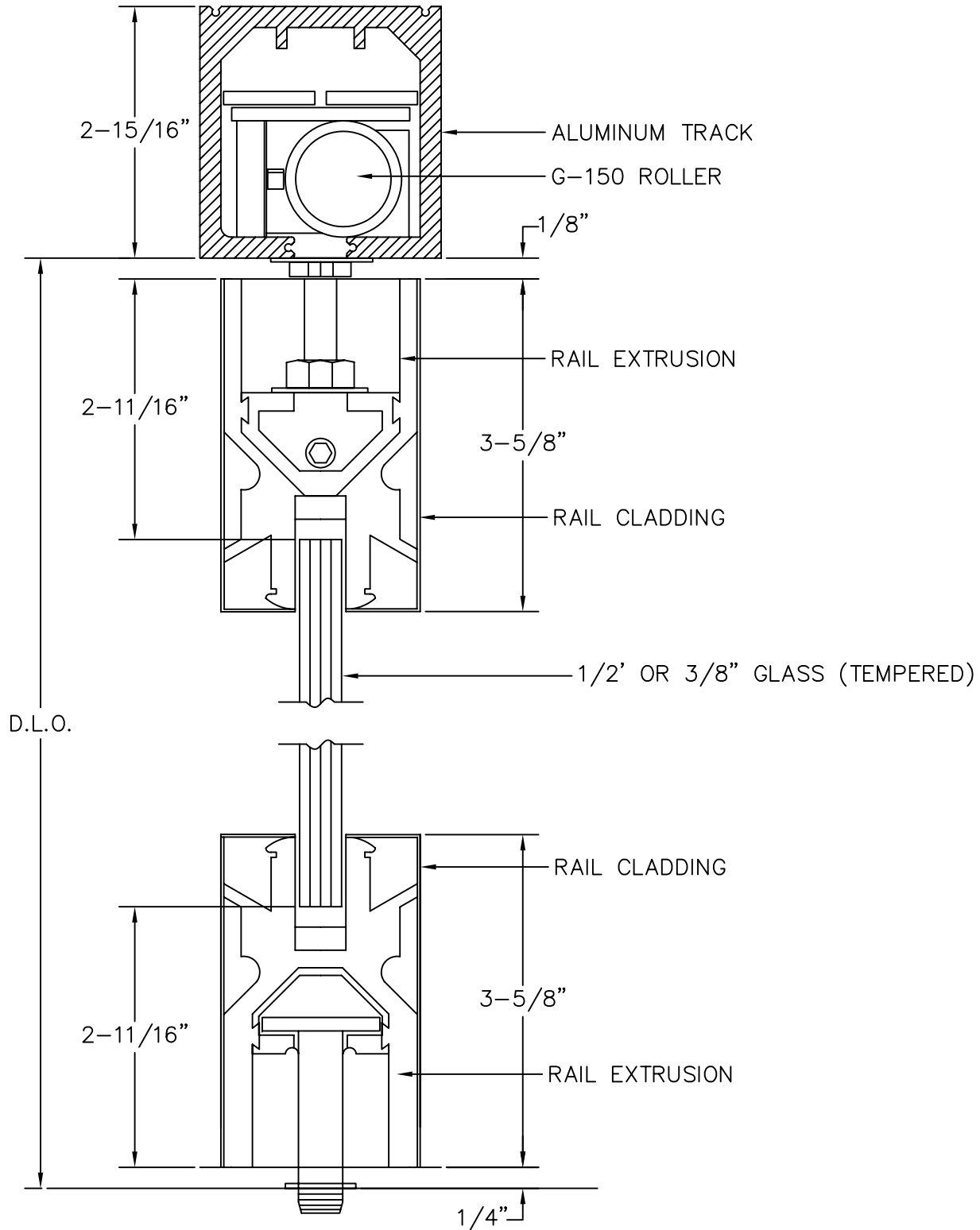
CLEAR BAKED ENAMEL

- Designed for 1/2" or 3/8" glass thickness.
- Special designed rollers ensure easy and smooth action around 90° corners.
- No floor track or guides required.
- The HSW technique enables architects and designers to have fixed panels or operating doors that can be rolled away .



TOP HUNG SYSTEM

HSW



SECTION THRU SLIDER